

New Home Warranty Program

Workmanship
Distribution Systems
Structural



Workmanship Warranty

Quality is important, especially in your new home. Your workmanship warranty establishes the standards applicable to the fit, finish, and materials used in the construction of your home.

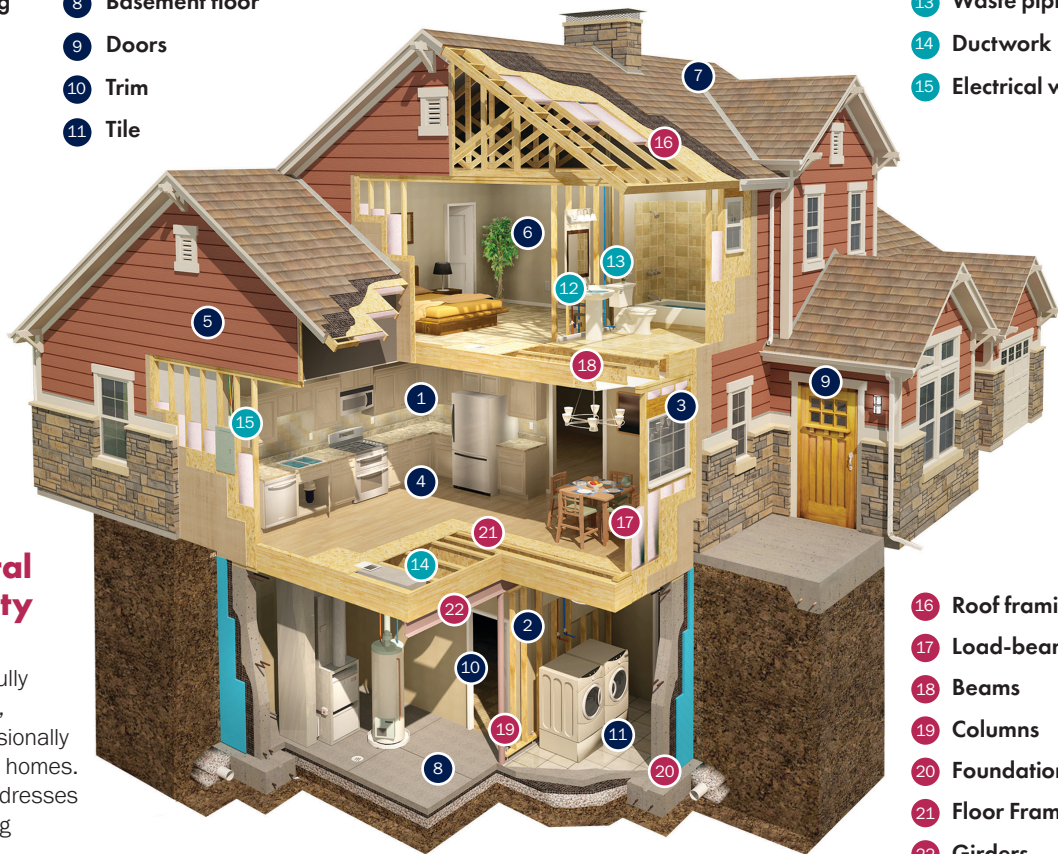
- 1 Cabinets and countertops
- 2 Carpentry and framing
- 3 Windows
- 4 Flooring finishes
- 5 Exterior finishes
- 6 Paint
- 7 Roof and flashing
- 8 Basement floor
- 9 Doors
- 10 Trim
- 11 Tile



Distribution Systems Warranty

You will rarely see behind the walls of your new home, but essential functions such as electrical, plumbing, and mechanical systems are working behind the walls. Your distribution systems warranty establishes the standards for your home's electrical, plumbing, and mechanical systems.

- 12 Supply piping
- 13 Waste piping
- 14 Ductwork
- 15 Electrical wiring



- 16 Roof framing systems
- 17 Load-bearing walls
- 18 Beams
- 19 Columns
- 20 Foundation systems
- 21 Floor Framing
- 22 Girders



Structural Warranty

While your home was carefully constructed and inspected, unforeseen problems occasionally arise, even in the best-built homes. Your structural warranty addresses the designated load-bearing elements of your home.



Homeowners register at
2-10.com/registerhome

- Easily search your digital warranty book
- View, download or print your warranty documents
- Enjoy exclusive access to our Home Appliance Discount program
- Add systems & appliances Home Service Plan

© 2023 Home Buyers Warranty Corporation. All Rights Reserved.

See warranty booklet and certificate for coverage details as well as terms and conditions that apply.